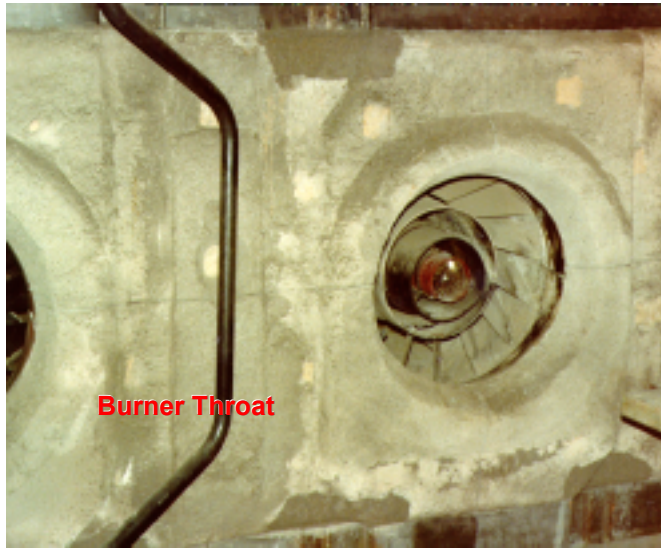


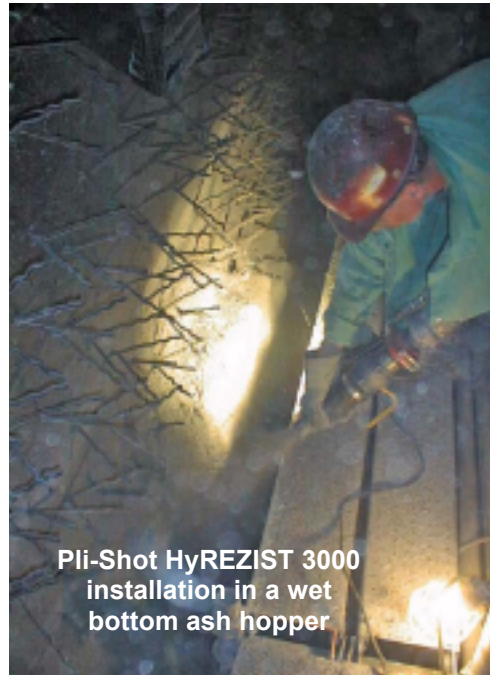


# Application Guide

**PULVERIZED  
COAL FIRED**



**Burner Throat**



**Pli-Shot HyREZIST 3000**  
installation in a wet  
bottom ash hopper

## **Burner Throats**

*Normal Service*

**Plibrico 60 AB**

*High Duty Service*

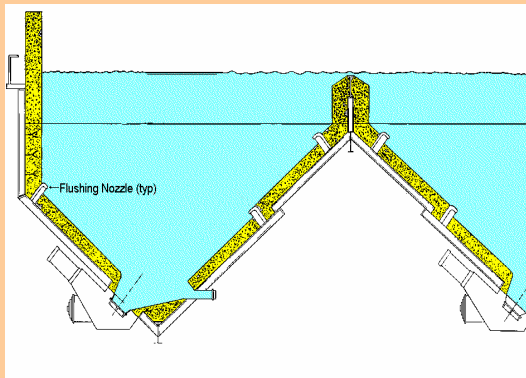
**Plibrico 80 AB**

*Severe Service*

**Plibrico 85S Sp**

## **Application Note**

### **Wet Bottom Ash Hopper**



*Normal Service*

**Pligun Tuff Mix**

*High Duty Service*

**Pligun HyREZIST 2700**

**Pligun HyREZIST TS Mix**

*Severe Service*

**Pli-Shot HyREZIST 3000**

**Plicast HyMOR TSR+**

## **Plibrico Company LLC**

1010 North Hooker Street  
Chicago, Illinois 60622

Tel: 312- 337-9000

Fax: 312- 337-9003

[www.plibrico-usa.com](http://www.plibrico-usa.com)

This application guide is intended for general information only. Please consult Plibrico Company or your local Plibrico Representative for specific application assistance and product recommendations.